



European Open Championship 2014

Ängelholm Sweden August 9-15

ec2014.j24sweden.com



2014 J/24 EUROPEAN OPEN CHAMPIONSHIP

9-15 August 2014

<http://ec2014.j24sweden.com>

NOTICE OF RACE

ORGANIZING AUTHORITY:

Ängelholms Sailing club Sweden (ÄSSS), J/24 Class Association, the International J/24 Class Association in conjunction with the Swedish Sailing Federation (SSF).

1. RULES

- 1.1. The regatta will be governed by the rules as defined in the Racing Rules of Sailing (RRS).
- 1.2. No national prescriptions will apply.
- 1.3. The Regatta Regulations of the International J/24 Class Association (IJCA) will apply.
- 1.4. RRS 41 will be changed as follows: From the time a boat leaves her mooring for the first race of each day until she returns to her mooring and while not racing, she shall not receive outside help except as permitted by RRS 41 from any outside source except other competitors and official boats under the direction of the organizing authority. While racing, RRS 41 applies without modification. If RC displays Race Signal AP over H, these additions to RRS 41 are suspended until a boat leaves her mooring again. This will change the preamble to Part 4 of the RRS.
- 1.5. Bow numbers will be assigned to each boat and will be used as identification for the boat during the regatta. Bow numbers shall be applied in accordance with the instructions supplied and shall remain affixed until after a boat hauls out at the end of the regatta.

ec2014.j24sweden.com



- 1.6. In accordance with RRS G3, a boat chartered or loaned for this event may carry national letters or a sail number in contravention of the class rules.
- 1.7. If there is a conflict between languages, the English text will take precedence.
- 1.8. Part 5, Section B of the RRS and RRS 41 will be changed to permit Protest Arbitration.
- 1.9. RRS 61.1(a) will be changed so that the red flag displayed by a protesting boat shall have a hoist of not less than 150mm and a fly of not less than 200mm.
- 1.10. RRS 44.3 will be changed so that code flag "I" may be used as the yellow flag and so that the flag used (either yellow or code flag "I") shall have a hoist of not less than 150mm and a fly of not less than 200mm.
- 1.11. Class Rule 5.3 will be changed in the Sailing Instructions as per RRS 87 to allow a boat to sail with different crew on different days, provided the crew changes are declared at registration. Crew changes not declared at registration will only be approved for emergency or extraordinary circumstances and only changed with written permission of the Jury

2. ADVERTISING

- 2.1. Competitor advertising shall comply with RRS 80
- 2.2. Boats may be required to display advertising chosen and supplied by the organizing authority.

3. ELIGIBILITY AND ENTRY

- 3.1. The European Championship is open to J/24 Class boats as defined by the IJCA class rules, and that qualify as prescribed in the IJCA Regatta Regulations, and whose entries is accepted by the organizing authority.
- 3.2. Championship helmspersons must be either nationals or residents and members of the National J/24 Class Association of the country that they represent.
- 3.3. Eligible boats may register by completing the online entry, available at <http://ec2014.j24sweden.com/online-entry/>, together with the required fees latest by 1st of July 2014. When registering you agree to the Condition of Entry available on <http://ec2014.j24sweden.com/online-entry/conditions-of-entry>.
- 3.4. Late entries may be accepted and will be subject to a 700SEK Late Entry Fee, in addition to the Race Entry Fee.
- 3.5. If there are co-skippers, one of them shall be designated as the primary skipper for this regatta.

4. FEES

- 4.1. Entry Fee: Four thousand five hundred SEK (4500SEK).
(Registration and payment of entry fee should occur before 1 July 2014. Late registration and/or late payment will be subjected to a late entry fee of 700 SEK).
- 4.2. The entry fee includes measurement, launching, hauling, storage/mooring while at the regatta, racing, and scheduled social events for all crew, prizes.
- 4.3. Additional fees for bringing non participating people to the social events will be published on the event website prior to the event and can be paid at registration.
- 4.4. All fees are payable by bank transfer to:
Bank details:
IBAN: SE959300000006250028807
BIC/Swift: NDEASESS
Account holder: ÄNGELHOLM-SKÄLDERVIKEN SEGELSÄLLSKAP

Swedish crews, please use Bankgiro 500-7976

NB! Please make sure that you state HELMSMAN NAME and SAIL NO. in order to identify your payment when you register online. The entry fee is not refundable.



5. SCHEDULE

5.1

Saturday, August 9

09:00 – 18:00 Registration
09:00 – 18:00 Measurement and Launching

Sunday, August 10

09:00 – 18:00 Registration, Measurement and Launching

Monday, August 11

09:00 – 15:00 Measurement and Launching by appointment only
15:00 Tune up race/s
18:30 Skippers' briefing
19:00 Opening ceremony

Tuesday, August 12

08:00 - 08:30 Crew Weigh-ins*
10:00 Warning for First Race of the Day
After Sail

Wednesday, August 13

08:00 - 08:30 Crew Weigh-ins*
10:00 Warning for First Race of the Day.
Approx. 19:00 Mid-week social event

Thursday, August 14

08:00 - 08:30 Crew Weigh-ins*
10:00 Warning for First Race of the Day
After Sail

Friday, August 15

08:00 - 08:30 Crew Weigh-ins*
10:00 Warning for First Race of the Day (last warning signal 14:00)
19:00 Closing event & prize ceremony

Saturday, August 16

10.00 – end Boat hauling according to schedule

* These scheduled crew weigh-ins are only for jury approved replacement crews per 1.11.

5.2. 11 races are planned for this event.

5.3. No warning signal will be made after 14:00pm on Friday the 15h of August, except for Postponements and General Recalls of a race where the warning signal was made before 14:00pm.

5.4. Haul outs: A definite hauling schedule may be established by the Organization and published on the official notice board before the 15th of August.

ec2014.j24sweden.com



6. REGISTRATION AND MEASUREMENT

6.1. At registration, each boat shall present:

- (a) A valid, IJCA issued Measurement Certificate, Including Part C: Inventory of Required and Optional Equipment. Boats that do not have a valid, IJCA issued Measurement Certificate must make arrangements to have their boat measured prior to the regatta. No first time or full measurement will be available during the scheduled regatta measurement time.
- (b) Proof of current marine liability insurance coverage in the amount of 2 million Euros per event or the equivalent.
- (c) Proof of J/24 Class Association membership in the country they represent for the owner and the helmsperson.

6.2. All competitors will be weighed during registration. Competitors must have a passport or other photo identification at weigh-in.

6.3. Inspection and measurement will be carried out on all boats for compliance with IJCA rule 3.7.3 (all up weight of 1330kg.) and on sails for compliance of IJCA rule 3.6.

6.4. Boats will be subject to inspection at any time during the regatta.

7. SAILING INSTRUCTIONS

Sailing Instructions will be given to competitors following registration confirmation by the Race Office and will be available after 9th May on <http://ec2014.j24sweden.com/racing/sailing-instructions/>.

8. VENUE

8.1. Attachment 1 shows the location of the regatta harbor.

8.2. Attachment 2 shows the location of the racing area.

9. THE COURSE

9.1. The course to be sailed will be windward/leeward with four or five legs. The target time for each race is approximately 60 – 85 minutes.

9.2. An offset mark at the windward mark will be used. Exceptions will be described in the Sailing Instructions.

9.3. A gate at the leeward mark may be used. Exceptions will be described in the Sailing Instructions

10. PENALTY SYSTEMS

10.1. The Scoring Penalty, RRS 44.3, will apply, with penalties as modified by the IJCA. See J/24 Scoring Penalties on the Class website, <http://www.j24class.org> Class Documents. These modifications will be printed in the Sailing Instructions.

- 10.2. An International Jury will be appointed according to RRS 70.5, whose decisions will be final.
- 10.3. Arbitration may be used prior to the protest hearing for incidents involving the rules of Part 2 or RRS 31.
- 10.4. Some other penalties as per RRS 64.1 will apply for breaking some IJCA rules. See J/24 Class Rule Penalties on the Class website. These penalties will be printed in the Sailing Instructions.
- 10.5. Failure to announce OCS over the VHF will be no grounds for redress. RRS 62.1 will be changed in the Sailing Instruction accordingly.
11. **SCORING**
- 11.1. Four races are required to be completed to constitute a championship according to IJCA regulation 10.1a.
- 11.2. When fewer than five races have been completed, a boat's series score will be the total of her race scores. When five or more races have been completed, a boat's series score will be the total of her race scores, excluding her worst score. Appendix A will be changed accordingly.
- 11.3. Boats failing to finish within 20 minutes after the first boat sails the course and finishes will be scored Time Limit Expired (TLE) without a hearing. Boats scored TLE will be scored points equal to the number of boats finishing within the time limit plus two points by the race committee without a hearing. RRS A4.2, A5 and A11 will be changed accordingly.
12. **SUPPORT BOATS**
- 12.1 Support boats shall comply with NOR 1.4.
- 12.2 Support boats shall register during scheduled registration, declaring to which boat or boats they are attached. They may be required to display an identification flag supplied by the organizing authority.
13. **BERTHING**
- 13.1. Boats shall be kept in their assigned places or areas, as directed by the organizing authority.
14. **HAUL-OUT RESTRICTIONS**
- 14.1. Boats shall be afloat no later than the 11th of August, and shall not be hauled out during the regatta except with and according to the terms of prior written permission of the International Jury. This includes rudders.
15. **DIVING EQUIPMENT, PLASTIC POOLS & OTHER PROHIBITED ACTIONS**
- 15.1. Underwater breathing apparatus and plastic pools or their equivalent shall not be used between the time the boat is afloat and the end of the regatta. The hull may be cleaned at any time by swimming or keelhauling using ropes, cloth or other equipment designed for that use.

15.2. Careening by any means for the purpose of cleaning or inspecting the hull is prohibited during the regatta. The hull may be cleaned at any time by swimming or keelhauling using ropes or cloth.

16. RADIO COMMUNICATION

16.1. Except in an emergency, a boat shall neither make radio or other data transmissions while racing nor receive radio or data communication not available to all boats. This restriction also applies to mobile telephones.

16.2. The race committee may choose to make VHF radio communications to the fleet on a channel to be announced in the sailing instructions. It is strongly encouraged that each boat has a VHF radio on board capable of receiving these communications.

17. PRIZES

17.1. The prize ceremony will take place on Friday the 15th of August 2014 during the J/24 European Championship Closing Event.

17.2. Prizes will be awarded to at least the top 15% of boats entered.

18. DISCLAIMER OF LIABILITY

18.1. Competitors participate in the regatta entirely at their own risk. See RRS 4, Decision to Race. The organizing authority shall not accept any liability for material damage or personal injury or death sustained in conjunction with or prior to, during, or after the regatta.

18.2. All competitors will also be required to sign a Competitor Liability Waiver form, to be completed at registration.

19. INSURANCE:

19.1. Each participating boat shall be insured with valid third party insurance with a minimum coverage of 2 million Euros per incident or the equivalent.

20. MEDIA RIGHTS

20.1. J/24 European Championship competitors give absolute right and permission to the organizers and event sponsors to use, publish, broadcast or otherwise distribute for promotional, advertising or any other purpose, any images and sound recorded during the event of persons and boats free of any charge.

20.2. All participants agree to waive their copyright claims to photographs taken of them during the event, and their right to have any recourse against the organizers for the use made of these photographs.

21. FURTHER INFORMATION, CONTACT THE FOLLOWING:

Regatta Chair: Kjell Holst at ec2014@j24sweden.com

Charter Boats: Anders Salenbo at ec2014@j24sweden.com

ec2014.j24sweden.com



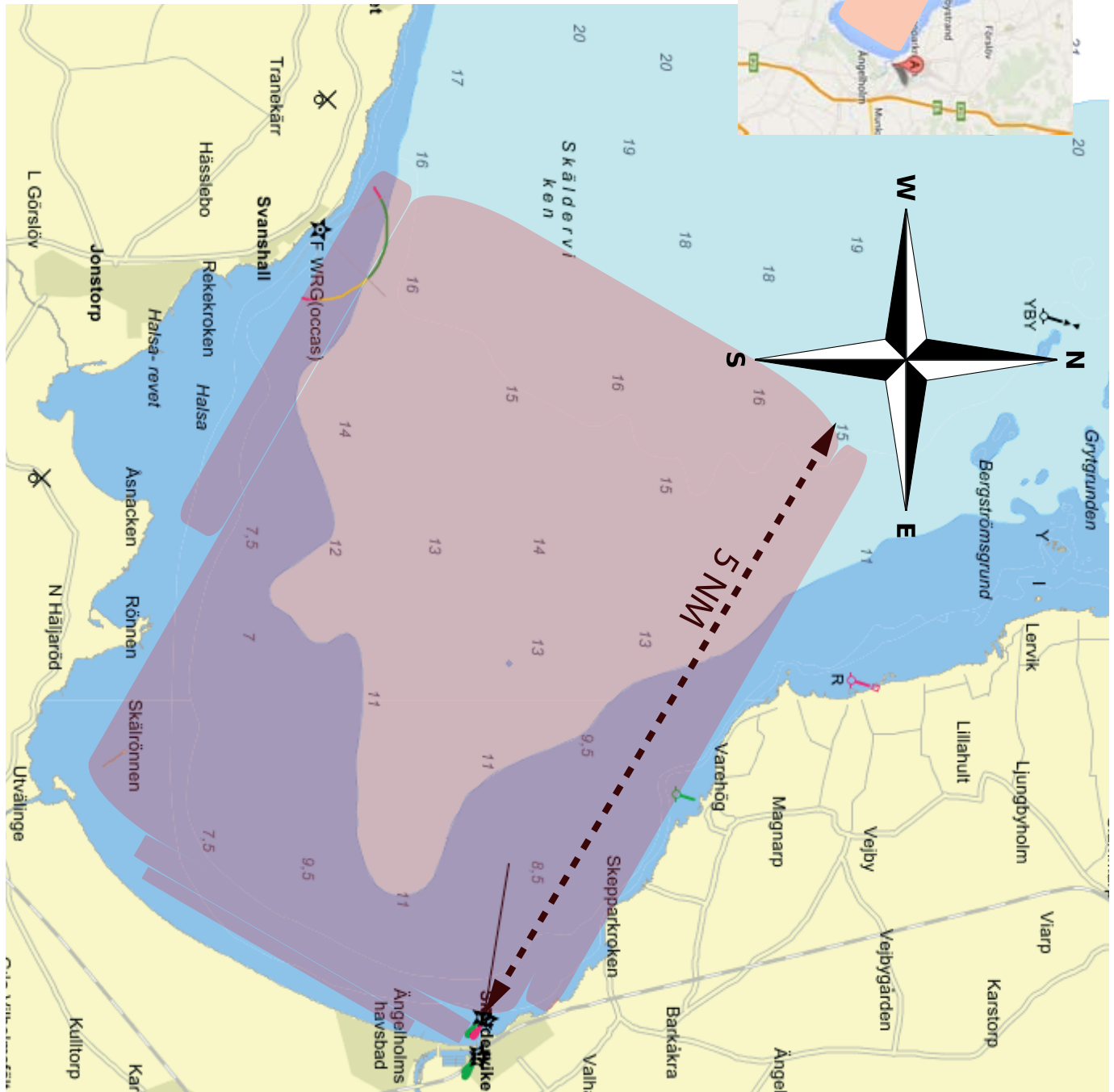
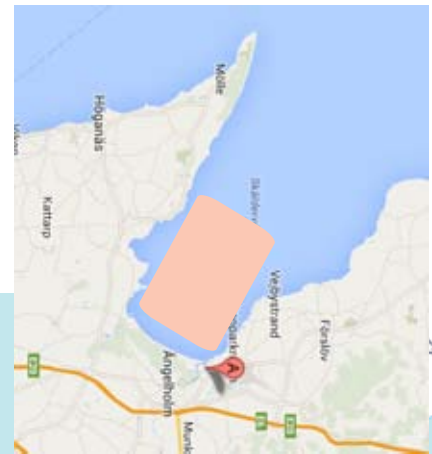


Attachment 1 - Harbour area

1. Sponsor area
2. Boat measurement line-up area
3. Haul-out and launching area
4. Mooring area
5. Parking area – sailors and sponsors
6. Trailer line-up area (after launching)
7. Parking area – officials
8. Check-in area
9. Boat area - Competition management
10. Sail measurement area
11. After sail area

Attachment 2 - Race Area

The race area is approximately 5 x 5 NM



ADDITIONAL INFORMATION

ACCOMMODATION

SAILORS VILLAGE – RÅBOCKA LODGE, KLITTERBYN

EC2014 recommends J/24 sailors to stay at Råbocka Lodge, Klitterbyn while competing at the Audi J/24 European Open Championship 2014 (www.klitterbyn.se). Råbocka Lodge is located only 1600m from the harbour area and can be accessed via a beautiful beach promenade.

For booking send an e-mail to: bokning@klitterbyn.se or call +46 (0) 431-45 86 00. In order to take advantage of the pre-negotiated fee please state promotion code 85588 and sail number.

For more info please read the Sailors Village Regatta Offer (Pdf) at http://ec2014.j24sweden.com/accommodations/#recommended_by_ec2014.

For pictures of Sailors Village Råbocka Lodge, Klitterbyn see: <http://ec2014.j24sweden.com/gallery/> (press the icon “Klitterbyn”).

RÅBOCKA CARAVAN & CAMPSITE

The Caravan & Campsite is situated just a short walk from the Sailors Village Råbocka Lodge, Klitterbyn and is located just 1500m from the harbor area. Råbocka campsite offers about 300 plots for caravans, campers and tents, all of them with electricity. The camp site also offer a full service Restaurant (open daytime and evenings), an all-day open Mini-grocery and an Ice-cream Bar. Wireless Internet is also available.

For booking please visit: <http://bokning.paxess.se/rabocka/>

REGATTA HARBOUR CARAVAN AND CAMPERS' SITE

NB: ONLY for Caravans and Campers, NO TENTS ALLOWED!

Price: 150 SEK/night, electricity and shower included in the price.

For booking contact ÄNGELHOLMS HAMNFÖRENING (www.afh.nu) by phone: +46 (0)431-21325 (land line), +46 (0)70-6150950 (cell phone), or by e-mail: info@afh.nu.

For more information on accommodation during the event, consult the list of hotels via the website: <http://boka.angelholm.com/en/accommodation>

FACILITIES AT THE HARBOUR

Showers and toilets are available for the J/24 competitors.

PARKING

One (1) vehicle parking space per registered boat will be made available by the Ängelholm Sailing Club for the duration of the event.

A parking space will also be allocated for the trailer.

GETTING TO THE J/24 EUROPEAN CHAMPIONSHIP

Logistic information can be found at <http://ec2014.j24sweden.com/logistics/>. Below info can be changed without any notice, please look at the website.

Address: ÄSSS/Ängelholm Sailing Club, Segelvägen 7, SE-262 61 Ängelholm, Sweden

GPS: N56° 16' 8" – E12° 50' 32"

By ferry

TT-Line – EC 2014 OFFER

EC2014 recommends J/24 sailors to book your ferry with TT-Line, where we have a cooperation. By booking you receive 20 % rebate on the ferry transportation (car + trailer up to 12 m) and on the cabin. Book online, through the online dialogue and enter your booking code 697 175 in the campaign box.

You can also do your booking by phone: +49 (0)4502 801 81 or by email: buchung@ttline.com.

For more information please read the TT-Line EC2014 Offer (Pdf) at

http://ec2014.j24sweden.com/logistics/#ferry_lines.

Scandlines: Saßnitz – Trelleborg, Rostock – Trelleborg, Helsingør – Helsingborg

www.scandlines.com

Tel: +46 (0) 410-650 00, 042-18 61 00

Unity Line: Swinoujscie (Poland) – Ystad. www.unityline.pl/en/

Tel: +46 (0) 411 – 55 69 00

Polferries: Swinoujscie (Poland) – Ystad. www.polferries.com

Tel: +46 (0) 40 – 12 17 00

Nordö Link: Travemünde – Malmö.

www.finnlines.com/freight/nordoelink_malmoe_travemuende

Tel: +49 (0) 4502 805 20, +49 (0) 4502 805 21, 040-17 68 00

By train

SJ: Domestic destinations - www.sj.se

Skånetrafiken: Regional trains and buses - www.skandetrafiken.se

Airport transfer from Copenhagen Airport.

By car

Route guide, www.viamichelin.com

Car rental AVIS <http://www.avis.se> or SIXT <http://www.sixt.com>

From Airport:

Copenhagen airport, Kastrup (CPH)

International airport - www.cph.dk. For transfer, see Skånetrafiken on the Trains tab.

Malmö airport, Sturup (MMX)

International airport - www.swedavia.com/malmo/. For transfer, see Flygbussarna on the Bus & Taxi tab.

Ängelholm/Helsingborg airport

Domestic airport - www.angelholmhelsingborgairport.se. For transfer, see Bergkvarabuss on the Bus & Taxi tab.

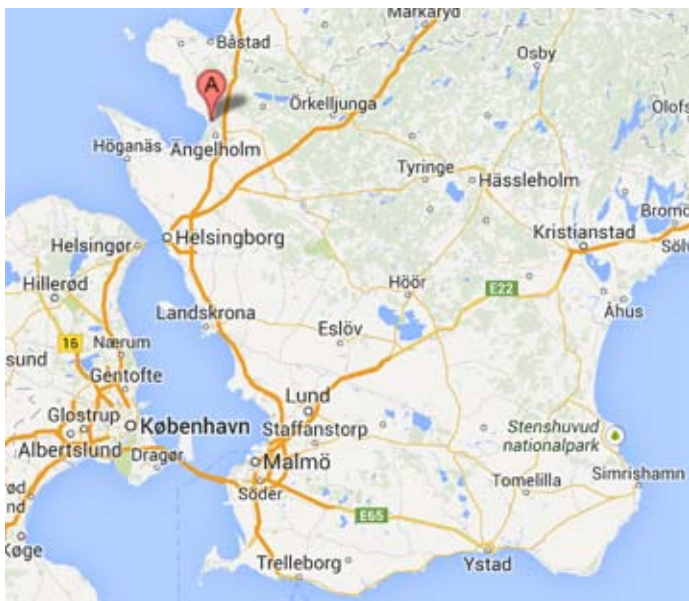
By bus/taxi

Taxi Ängelholm, www.taxiengelholm.se

Skånetrafiken City Bus (and trains) www.skandetrafiken.se

Directions from train station to harbour: Line 2, stop at "Småbåtshamnen".

Bergkvarabuss www.bergkvarabuss.se/en/ Airport transfer from Ängelholm/Helsingborg Airport.



Ängelholm is located 100 km north of Malmö



European Open Championship 2014

Ängelholm Sweden August 9-15

ec2014.j24sweden.com

RACE COMMITTEE AND JURY MEMBERS

Race Committee: Annika Ekman (IRO)
Morgan Sundén (Race officer)

Jury Members: Willii Gohl
Margriet Pannevis
Luciano Giacomi
Aina Hellmann Jurander
Hans Kurt Andersen

REPAIR AND SUPPLY FACILITIES FOR BOATS, EQUIPMENT AND SAILS
Repair service and supplies for boats, equipment and sails will during the event
be provided by NORTH SAILS



ec2014.j24sweden.com

